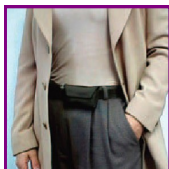


BELTER™

The Belter™ holds your pump on your belt. Just slip your belt through the back of the Belter™ and you can wear your pump in a vertical or horizontal position. The Belter™ accommodates belts up to 3.8cm wide. Looks great for business attire too.



\$41

- 100-028-00 Black**
- 100-028-04 Dark brown (while stocks last)**

WAIST-IT™ FOR CHILDREN AND ADULTS

The Waist-It™ is like the Clip-N-Go™. It fits securely under clothing. You can even wear it to bed. Made from very soft velour and elastic straps that Velcro™ securely around the waist. Great for exercising or under an un-tucked shirt. The Waist-It won't bounce around. Works with all tubing lengths. Adult straps are 3.8cm wide. Children's straps are 2.5cm wide

\$52 each

- 100-026-00 Adult black**
- 100-026-01 Adult white**
- 100-027-00 Child's black**
- 100-027-01 Child's white**



SPORT-PAK™

Small, compact and ideal for the athlete. Designed to wear around your waist and keep tubing secure and tucked away. The pack fits against your body without bouncing around. Made of neoprene, it has a zippered compartment to hold your supplies. The adjustable straps fit around the waist of any child or adult.

\$69

- 100-025-00 Black**

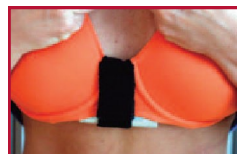


BRA BAND™

With the Bra Band™, you can attach your pump horizontally behind the centre of your underwire bra. Made from soft 3.8cm wide elastic Velcro™, the band holds your pump securely to the centre of your bra. You can bolus through your bra without taking the pump out. The band fits any underwire bra A cup size or larger.

\$42 each

- 100-058-00 White**
- 100-058-01 Black**



BRA POCKET™

The Bra Pocket™ is just as it sounds – for women who want to wear the pump, hassle-free. Works great for everyday fashions, even fancy parties! Made of very soft velour and finished with a beautiful satin ribbon, each Bra Pocket comes with one sew-on and two stick-on pieces of Velcro™. The Velcro™ ensures that the pocket stays securely in place.

\$37 each

- 100-023-00 Black**
- 100-023-01 White**



PUMP ACCESSORIES



Animas
CORPORATION

**COOL THINGS TO
MAKE WEARING
YOUR PUMP MORE
CONVENIENT AND
COMFORTABLE**

Prices effective 1 October 2010 and include gst



Toll Free 0508 634 103

A division of New Zealand Medical and Scientific Ltd

P 09 259 4062
F 09 259 4067
E nzms@nzms.co.nz

PROTECT YOUR PUMP

ANIMAS® PUMP SKINS

Skins are made of thick, flexible rubber which helps protect the pump against the bumps and bruises of daily living. Fits the Animas® IR1200 and 2020 Insulin Pumps.



\$29 each

- 100-495-00 Blue**
- 100-495-01 Black**
- 100-495-02 Red**
- 100-495-03 Pink**
- 100-495-04 Green**
- 100-495-05 Purple**
- 100-495-06 Desert Camo**
- 100-495-07 Pink Camo**

LENS PROTECTION FILM KIT

A lens film helps protect the insulin pump screen from minor scratches caused by daily wear and tear. The kit includes 3 lens films, squeegee and spray plus step-by-step instructions on how to apply to the pump screen.



\$21 per pack

- 100-521-00 Pack of 3**

CARTRIDGE CAP

Replacement cartridge cap in case you lose or break the one that comes with the pump.

\$36



- 100-159-01**

BATTERY CAP

Battery caps need to be changed every six months to keep the pump water tight. If the pump is exposed to a lot of dust or water it is recommended that the cap is changed every three months.



\$36

- 100-158-01 Includes o-ring**

TAMPER RESISTANT CASE

Ideal for small children, the tamper resistant case has a removable clear acrylic piece inside to prevent tampering or provide protection during rough sport or play. It can be worn around the waist and locked through the zipper ends using a small luggage lock, available at most stores.



\$65 each

- 100-185-00 Royal blue**
- 100-185-01 Purple**
- 100-185-02 Black**

WAYS TO WEAR YOUR PUMP

LEATHER CASE WITH DOME

With its built-in clip, the leather case allows you to wear your pump on your belt or waistband.

- 100-276-00 Black**



LOW PROFILE CLIP

Deigned to let the pump fit snugly against your waist.

\$46

- 100-195-01 Black**

CLIP-N-GO™

Clip your pump to your waistband. The interlocking clip holds it securely in place. Made of water resistant nylon with a soft cotton lining.

\$52



- 100-030-00 Black**

SLEEP-EZE™



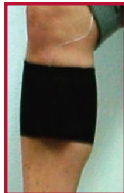
Sleep comfortably with your pump. Pin the soft, velour Sleep-Eze™ to the inside or outside elastic on your underwear, boxers or pyjamas.

\$27 each

- 100-012-01 Black**
- 100-012-00 White**

LEG-THING™

If wearing the pump on your belt is not the most convenient spot, try the Leg-Thing™. Perfect under pants or a long dress, the Leg Thing™ is worn on your calf like the top of a sock. The specially designed, secure pocket discreetly holds your pump with a Velcro™ enclosure.



\$52 each

- 100-031-00 Black**
- 100-031-01 White**

THIGH-THING™



The Thigh-Thing™ is designed for short skirts, dresses or shorts. The garter grip lets you secure your pump to your pantyhose or underwear. Made of nylon/spandex, the Thigh Thing is designed so it won't lose its shape.

The detachable garter grip is included so you can secure it in any position you want. Works with all tubing lengths.

\$52 each

- 100-032-00 Black**
- 100-032-01 White**