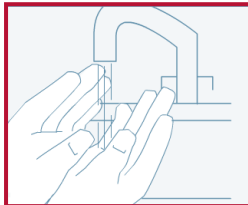


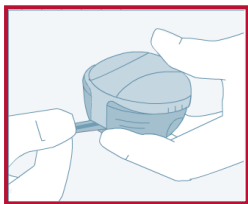
INSERTION OF INSET II INFUSION SETS

This guide is a summary only and intended as a quick reference guide only. Please refer to package insert for full instructions and precautions.



Wash and dry your hands thoroughly.

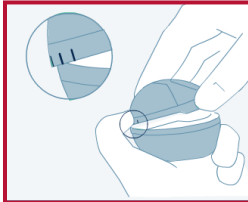
Thoroughly clean the insertion site and allow to dry. Use of **Adhesive Wipes** will clean the site and help the set to stay in place.



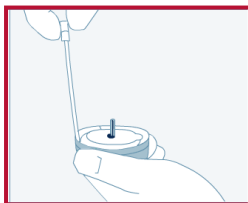
Pull the tape to remove the seal.



Remove the sterile paper from the bottom of the set housing.



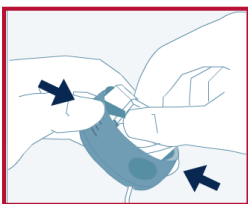
Press the three raised dots on each side of the lid firmly with one hand and lift up with the other hand.



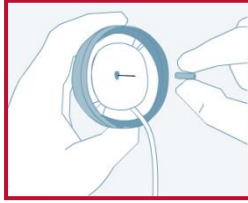
Carefully twist the beginning of the tubing out of the slot. Pull up gently. Gently unwind the tubing from the insertion device by pulling it carefully upwards.



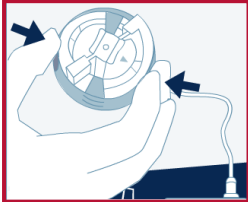
Pull up gently to remove the adhesive backing paper.



Prepare the inserter by placing fingers on lined indentations. Press lined indentations on each side and pull spring up until you hear a "click".

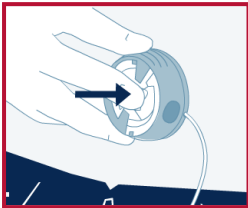


Carefully remove the needle guard by gently twisting and then pulling it.



Position inset™ II over the insertion site.

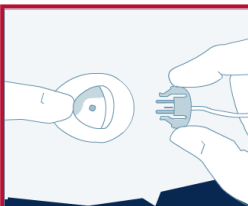
Simultaneously press the round indentations on either side of the insertion device to insert inset™ II.



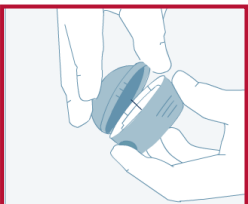
Push gently on the centre of the inserter to secure the adhesive on the skin.



Remove the inserter/introducer needle by grasping the centre and pulling it gently back. Massage the tape thoroughly into the skin.



Disconnect the site. Connect the line to the cartridge in the pump and prime the line. Ensure there are no air bubbles. Reconnect the line to the site and fill the cannula.



Push the lid back in place until you hear a "click".

With the lid properly connected, inset™ II can be disposed of safely.

REMEMBER TO FILL NEW CANNULA

6 mm cannula : 0.30 units

9 mm cannula : 0.50 units